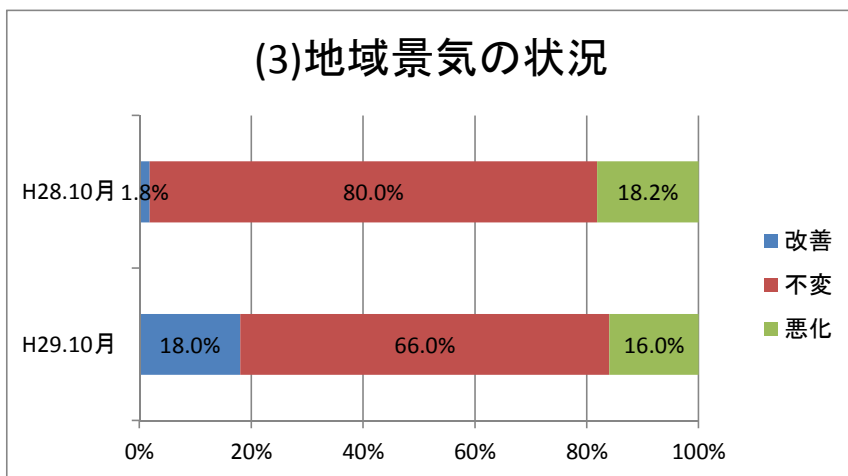
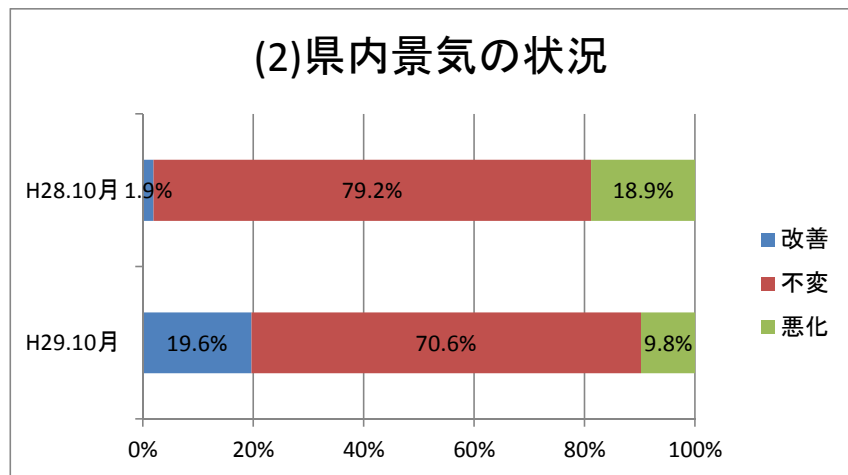
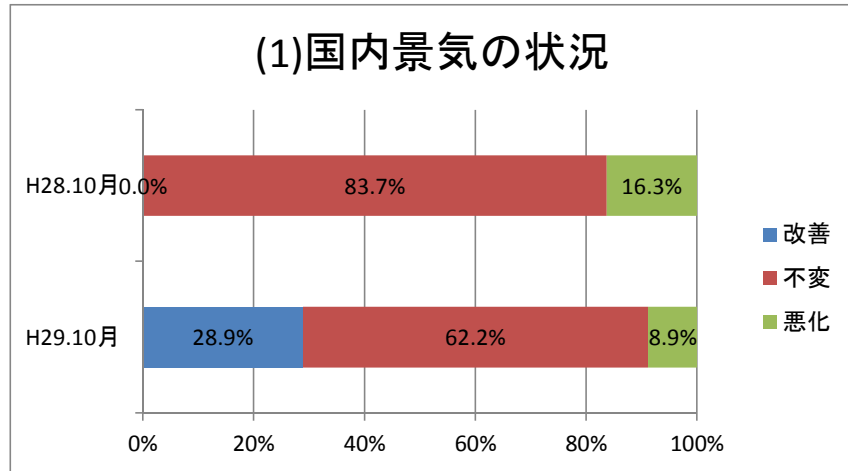


岩手県機械金属工業協同組合連合会景気動向調査結果(平成29年10月調査分)

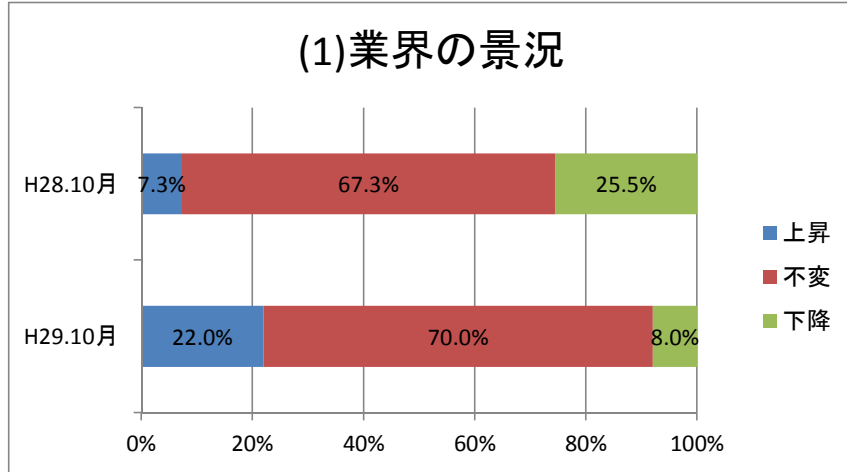
回答数 平成28年10月・・・55社／126社(43.7%)  
平成29年10月・・・51社／123社(41.5%)

I. 直近3ヶ月の国内等の景況について

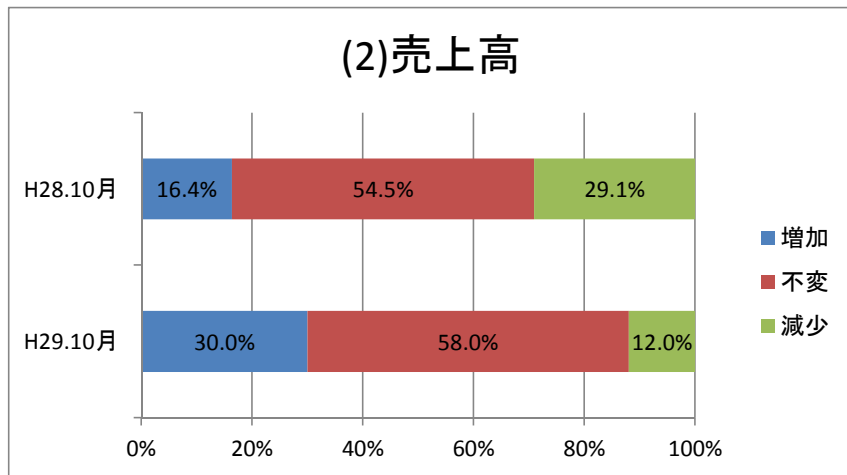


## II. 貴社の景況について（直近3カ月の動向）

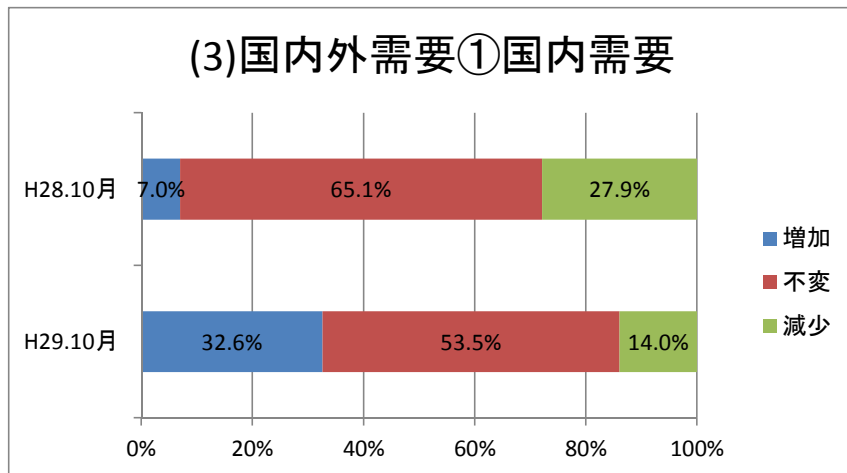
### (1) 業界の景況



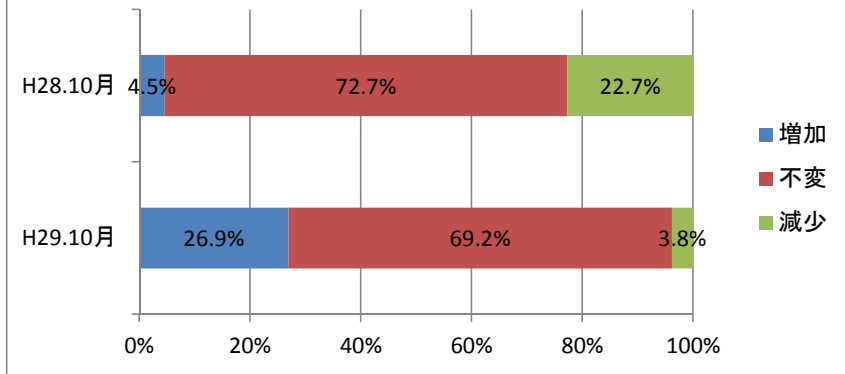
### (2) 売上高



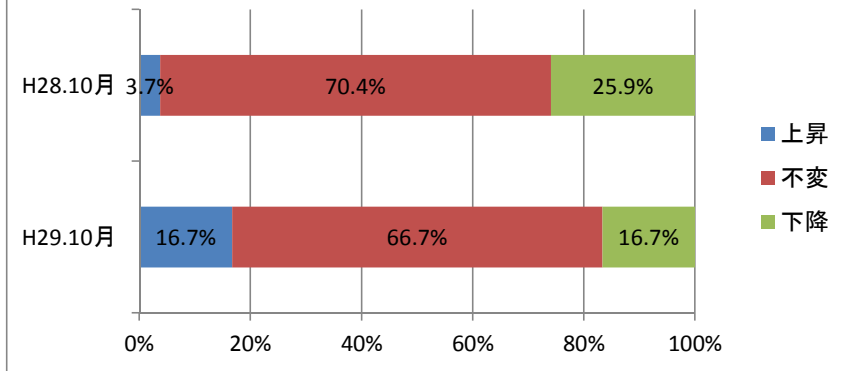
### (3) 国内外需要①国内需要



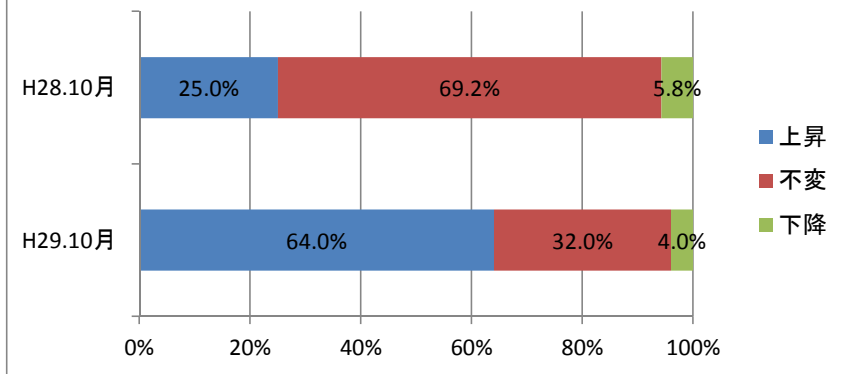
### (3)国内外需要②海外需要



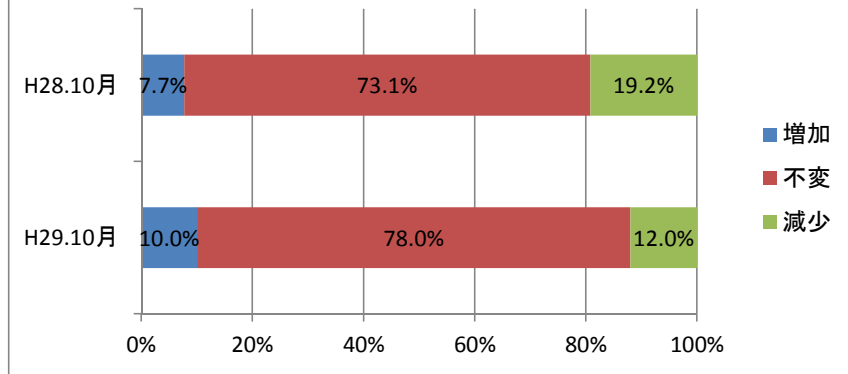
### (4)製品販売(受注)価格



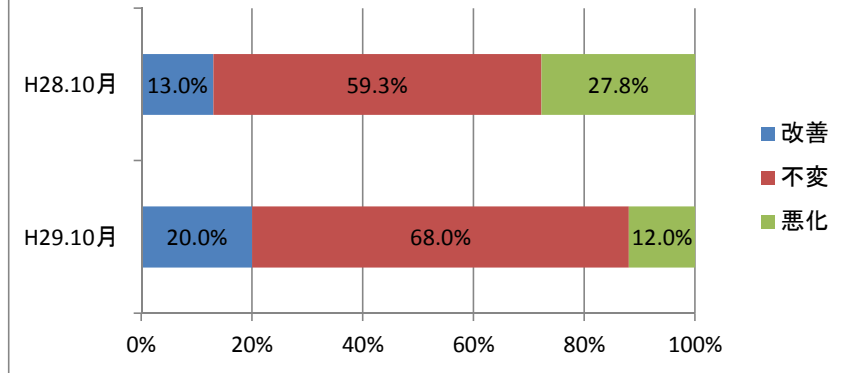
### (5)原材料費



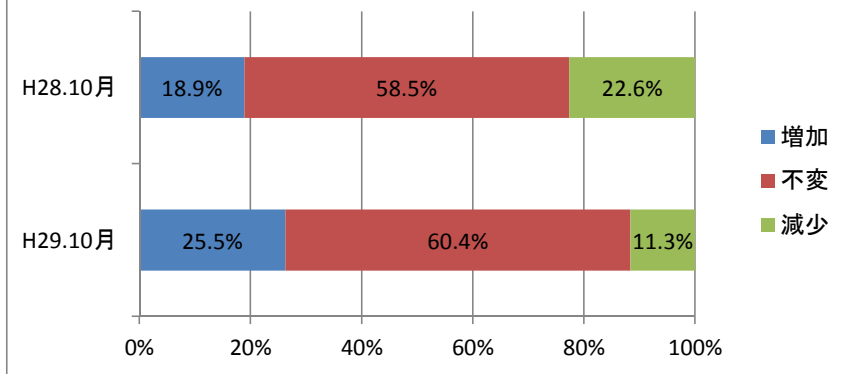
### (6) 在庫数量



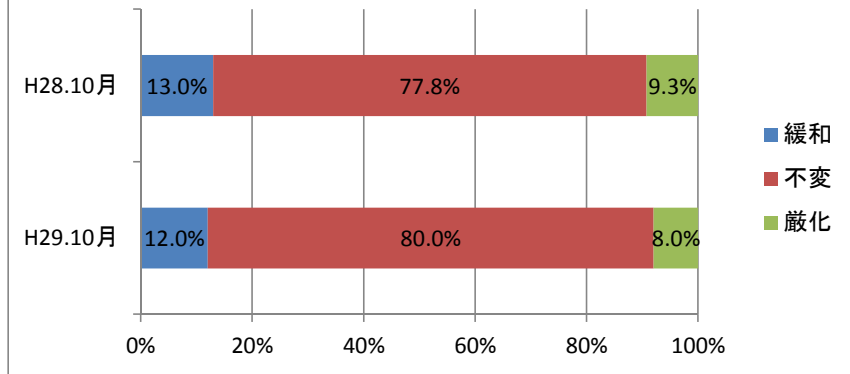
### (7) 収益状況



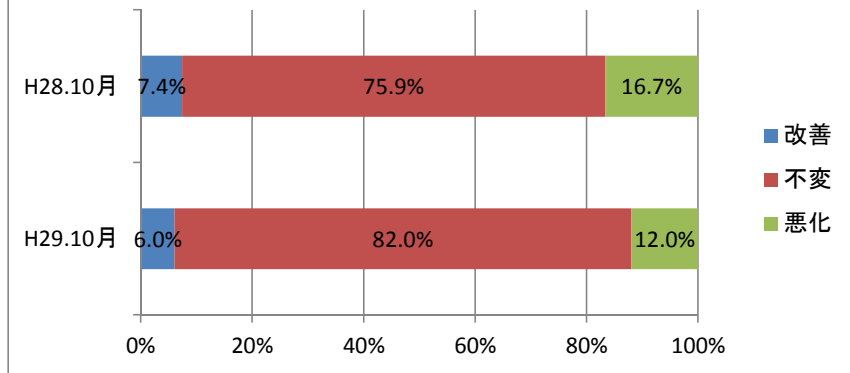
### (8) 設備投資



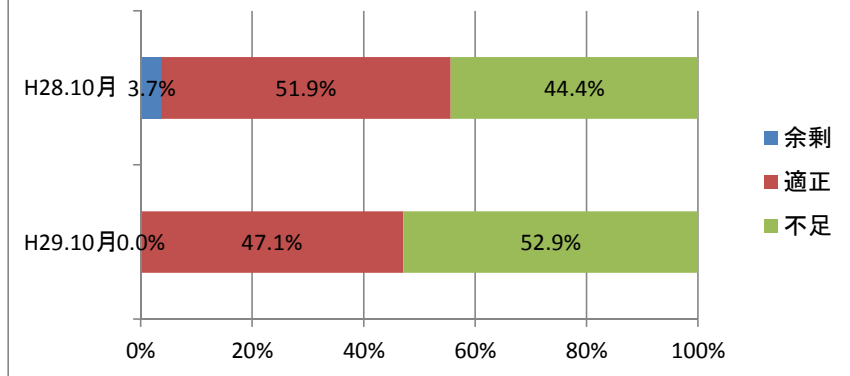
### (9)金融機関の融資態度

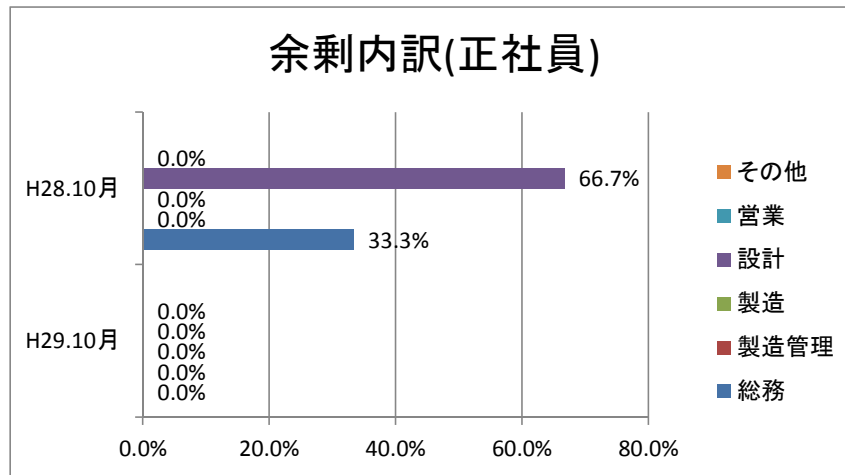


### (10)資金繰り

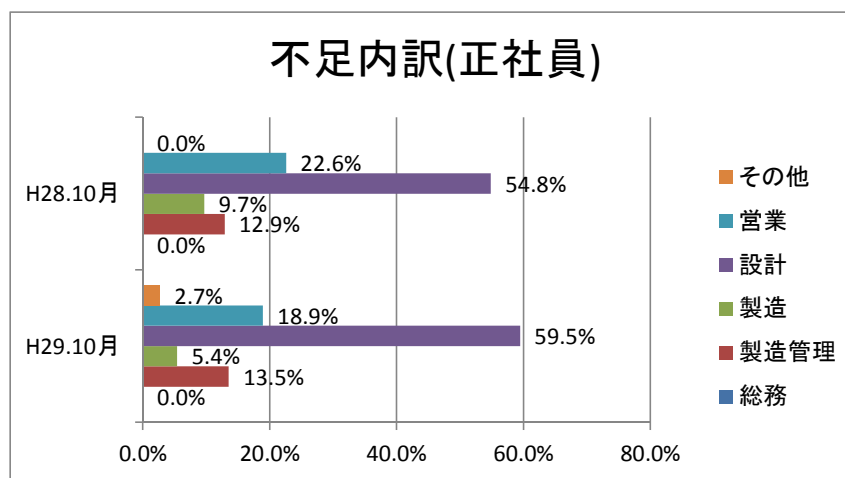


### (11)雇用状況①正社員数

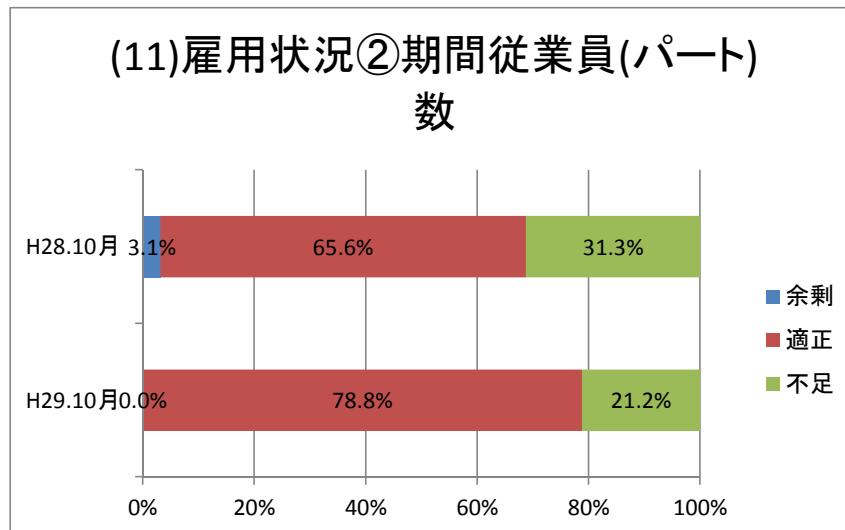




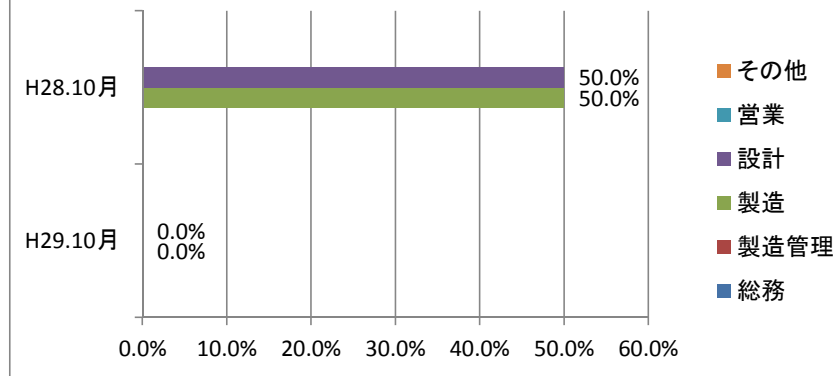
※総回答数に対する割合。



※総回答数に対する割合。

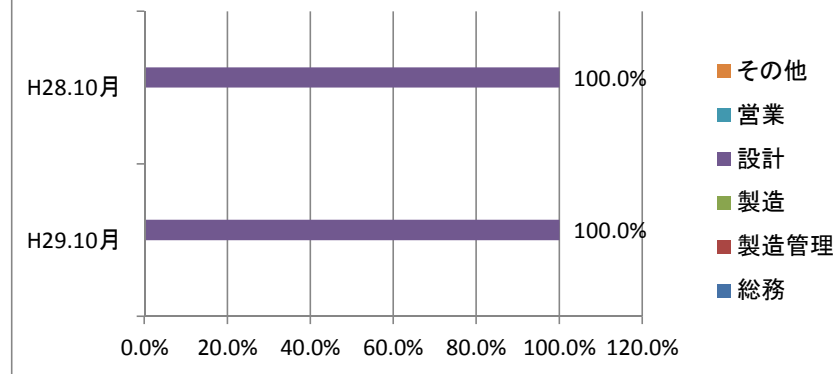


### 余剰内訳(期間従業員)



※総回答数に対する割合。

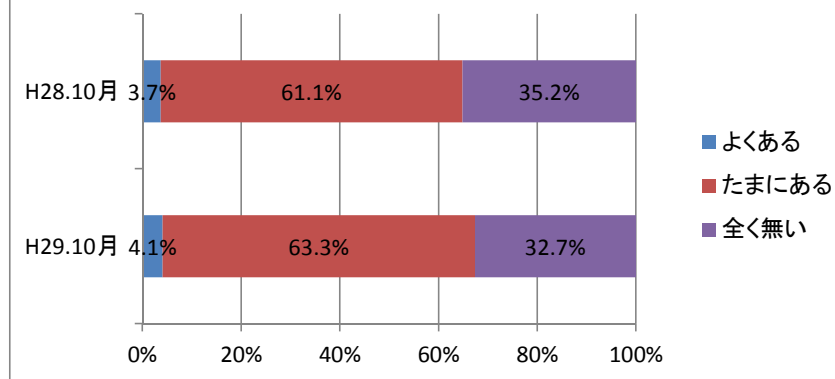
### 不足内訳(期間従業員)



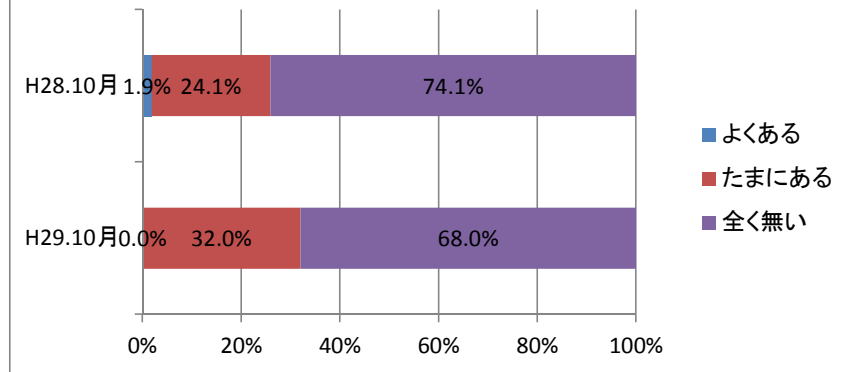
※総回答数に対する割合。

### Ⅲ. 貴社の受注環境について

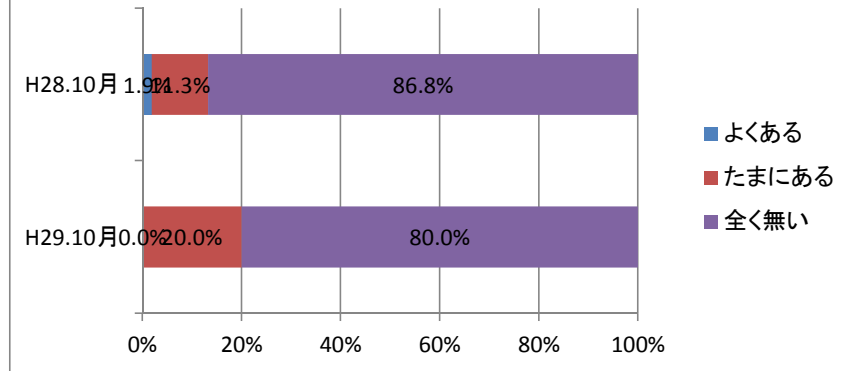
#### (1)安値による受注(取引)要請



## (2)受注後の値下げ要請

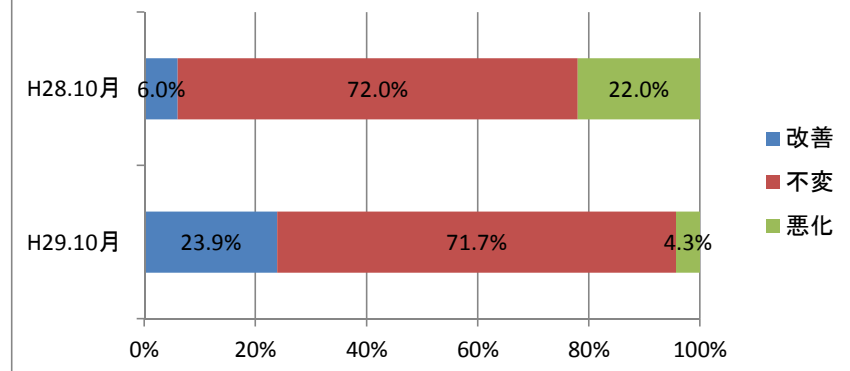


## (3)決済方法の変更



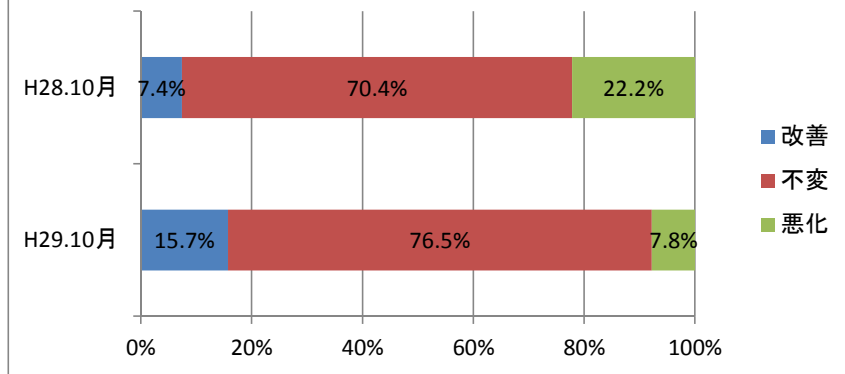
## IV. 今後3ヶ月の景況見通しについて

### (1)国内景気の見通し

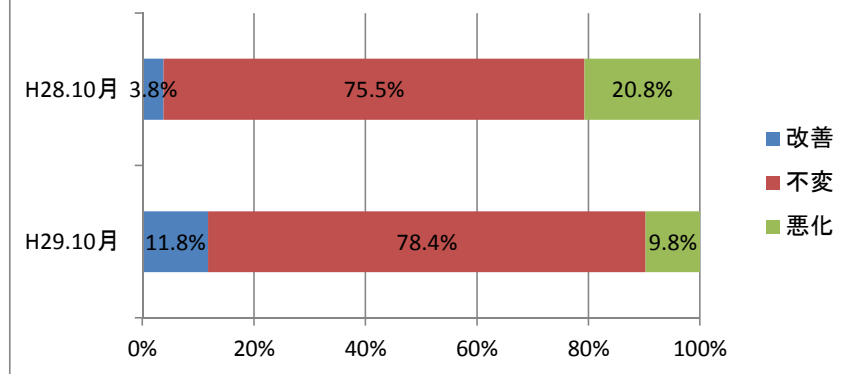




## (2) 県内景気の見通し



## (3) 所在地域の景気見通し



## (4) 業界の見通し

