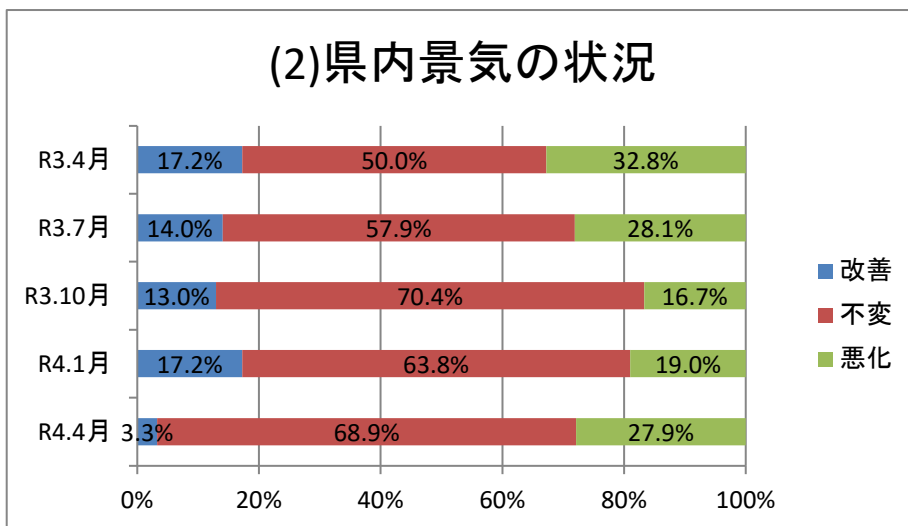
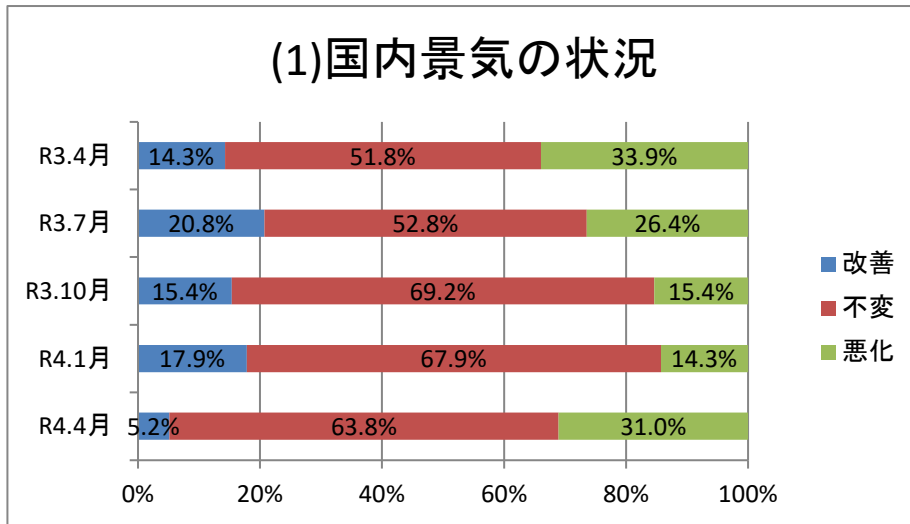


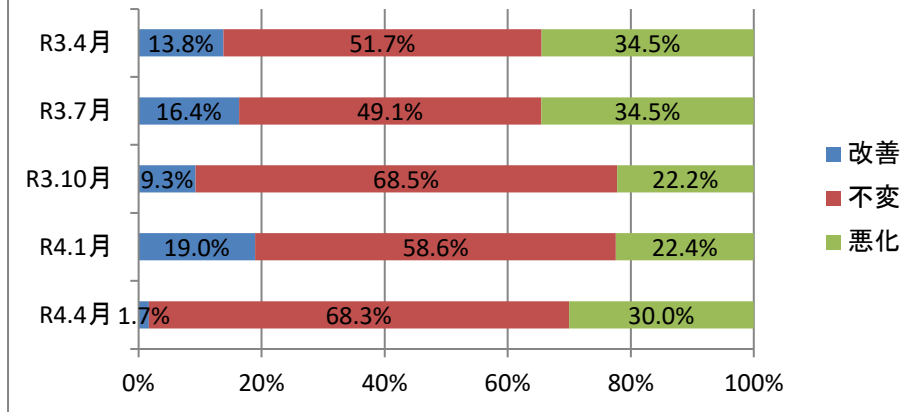
岩手県機械金属工業協同組合連合会景気動向調査

回答数 令和3年10月…54社／99社(54.6%)
令和3年7月…58社／99社(58.6%)
令和3年4月…58社／99社(58.6%)
令和4年1月…57社／99社(57.6%)
参考：令和4年4月…60社／99社(60.6%)

1. 景気状況

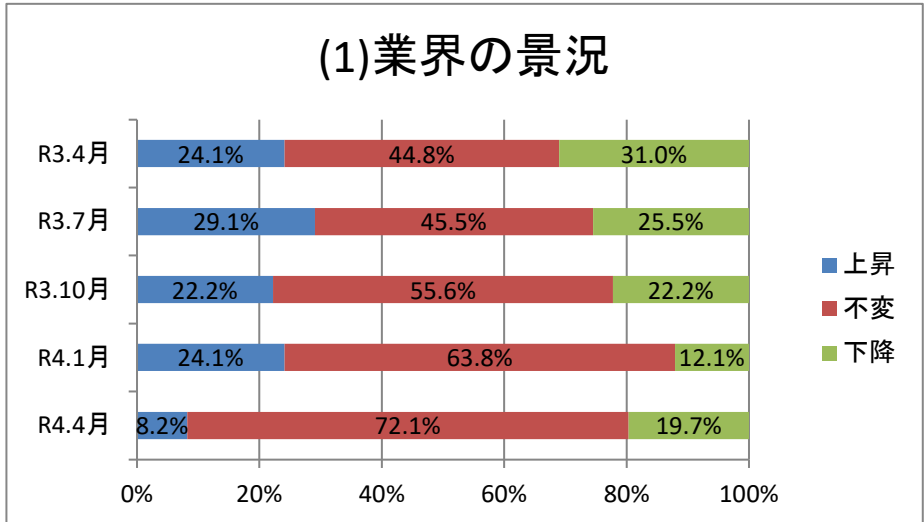


(3)地域景気の状況

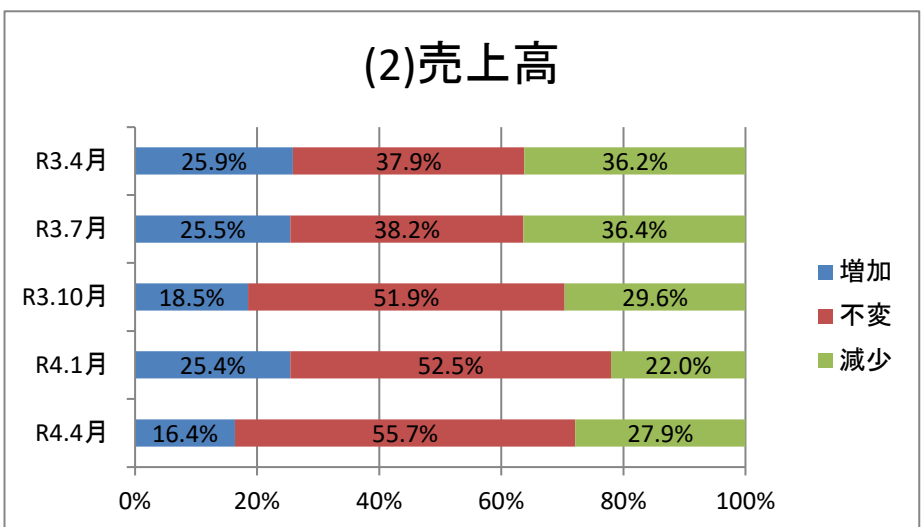


2. 業界景況・売上高等

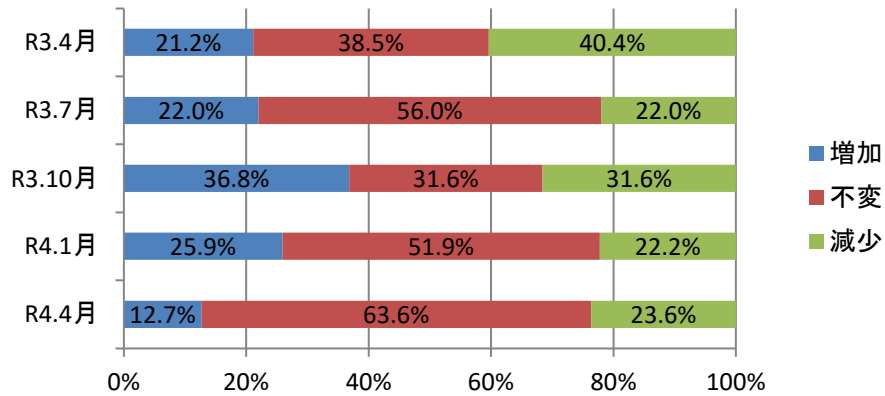
(1)業界の景況



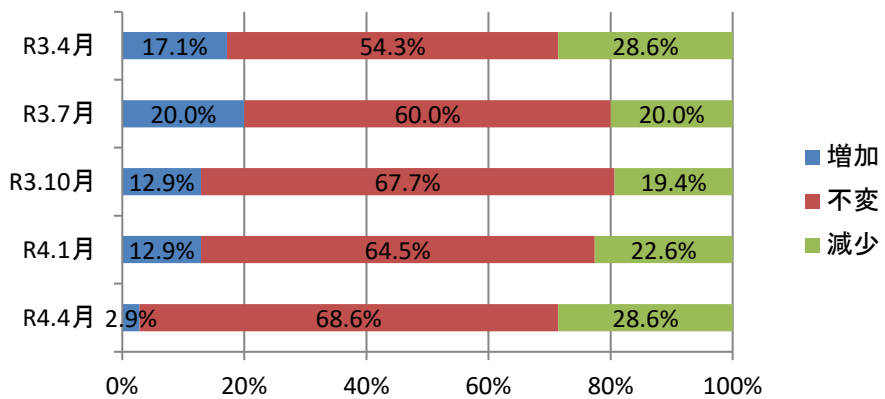
(2)売上高



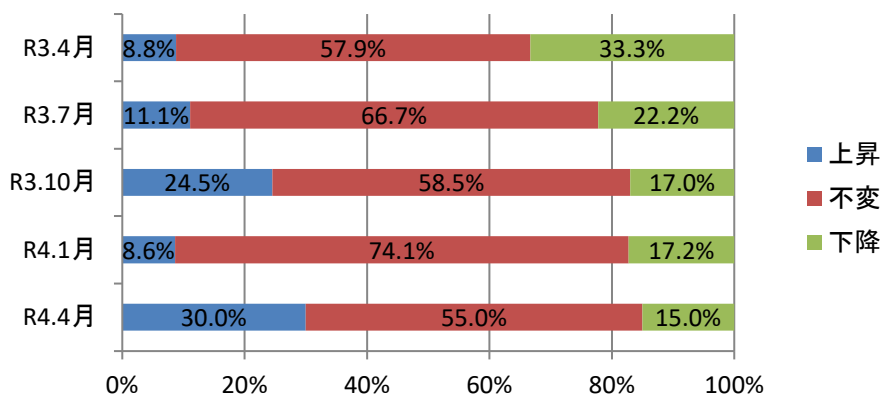
(3)国内外需要①国内需要



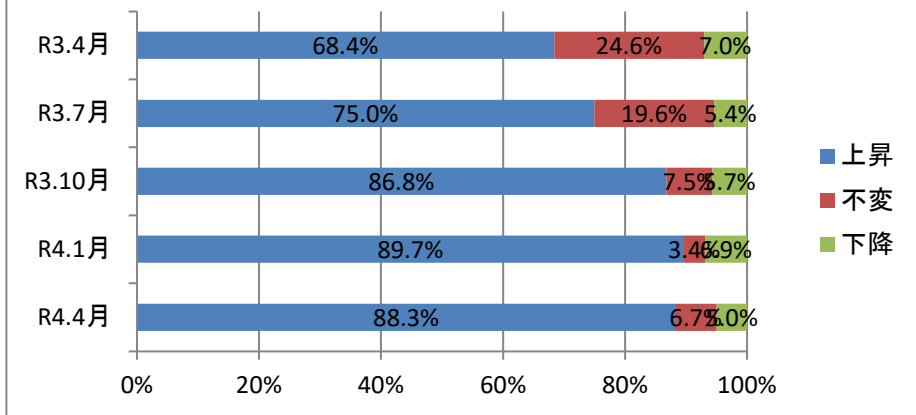
(3)国内外需要②海外需要



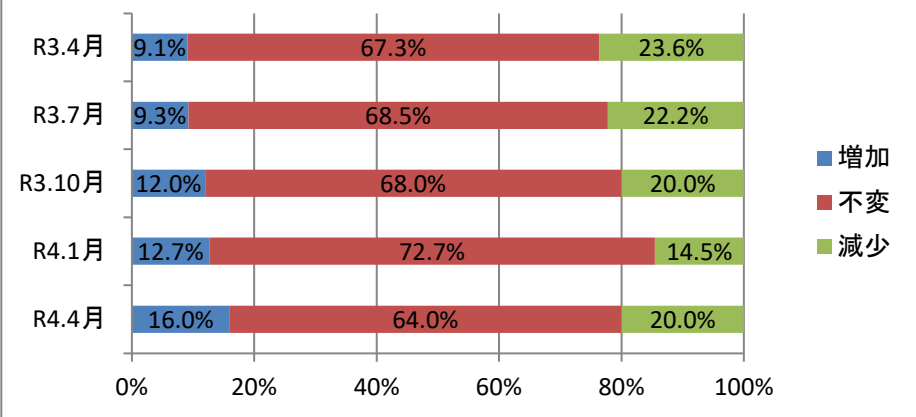
(4)製品販売(受注)価格



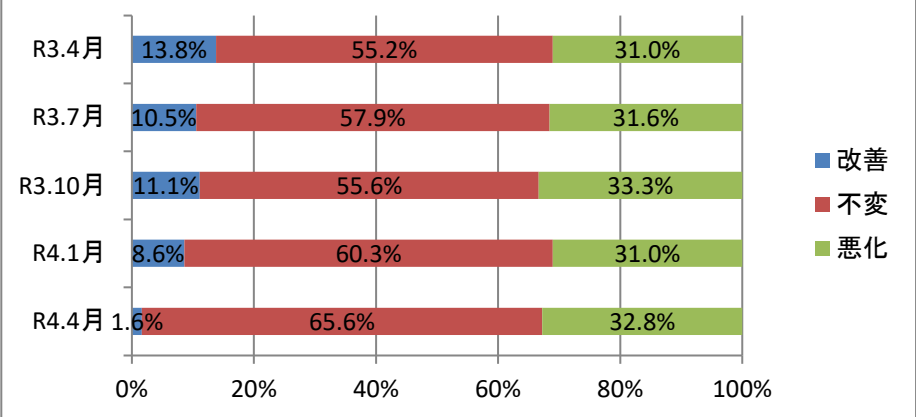
(5) 原材料費



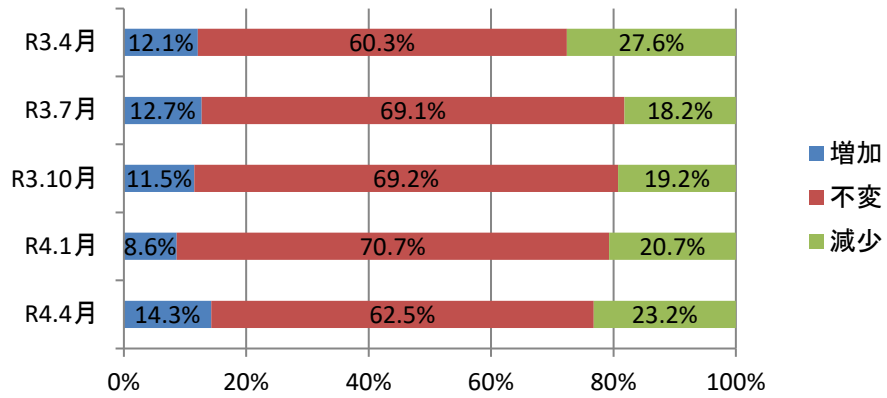
(6) 在庫数量



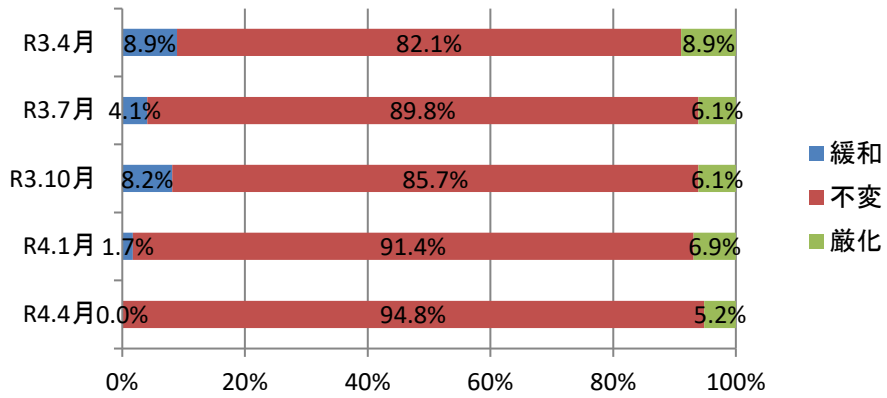
(7) 収益状況



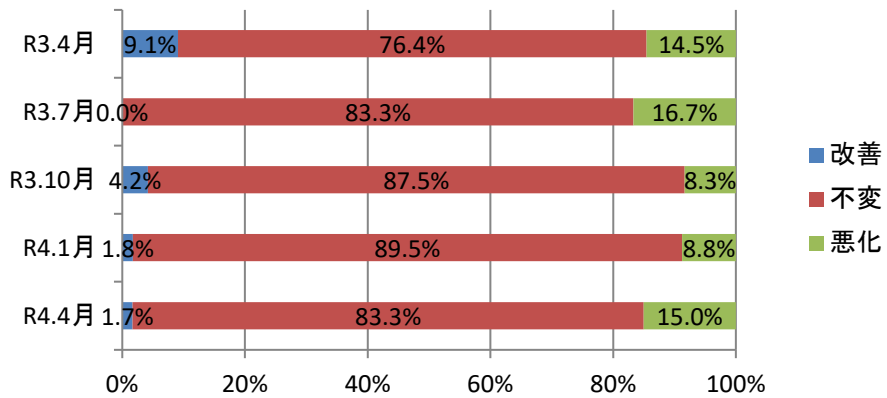
(8)設備投資



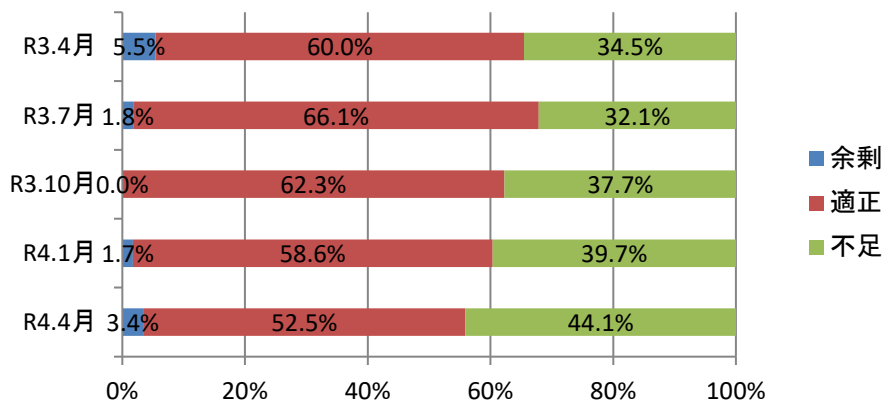
(9)金融機関の融資態度



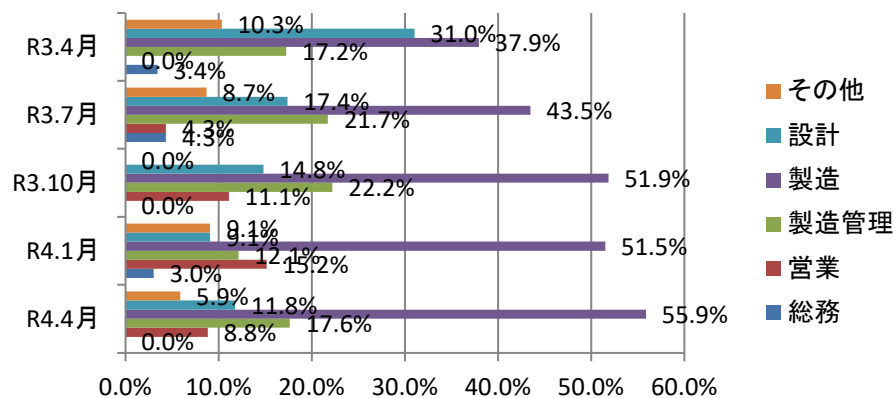
(10)資金繰り



(11)雇用状況①正社員数

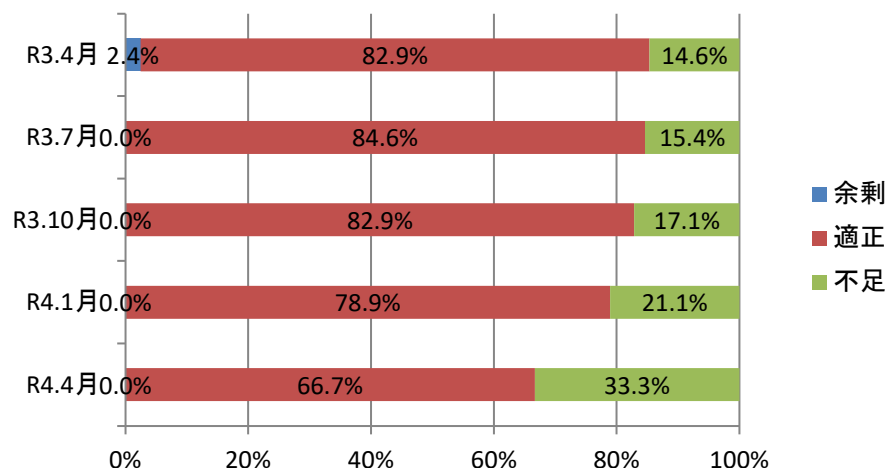


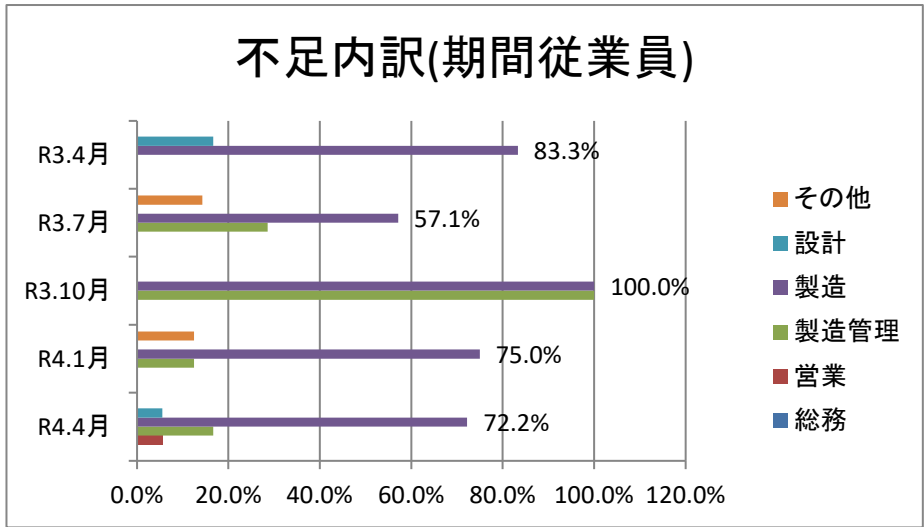
不足内訳(正社員)



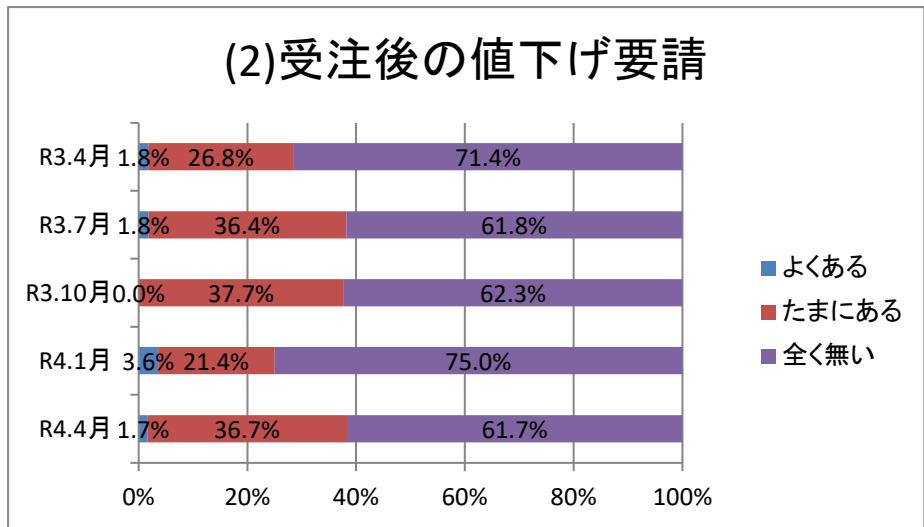
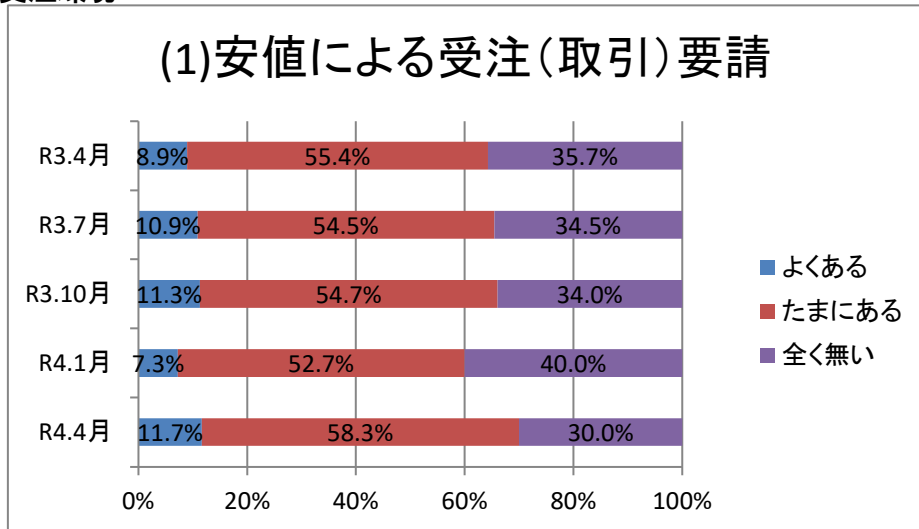
※総回答数に対する割合。

(11)雇用状況②期間従業員(パート)数

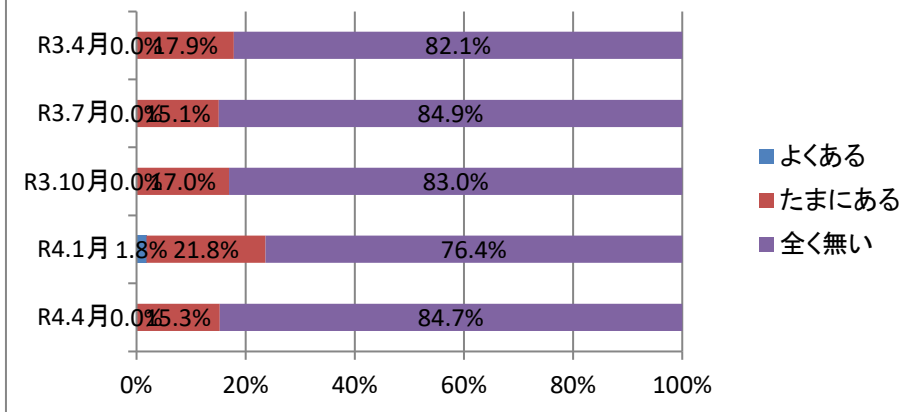




3. 受注環境

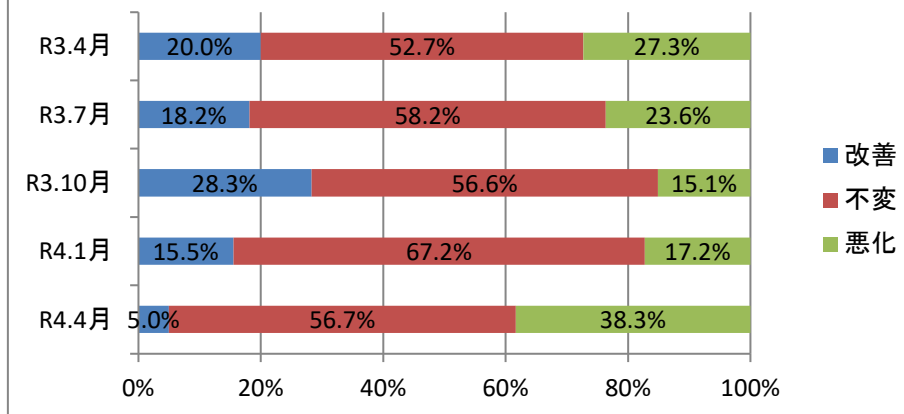


(3) 決済方法の変更

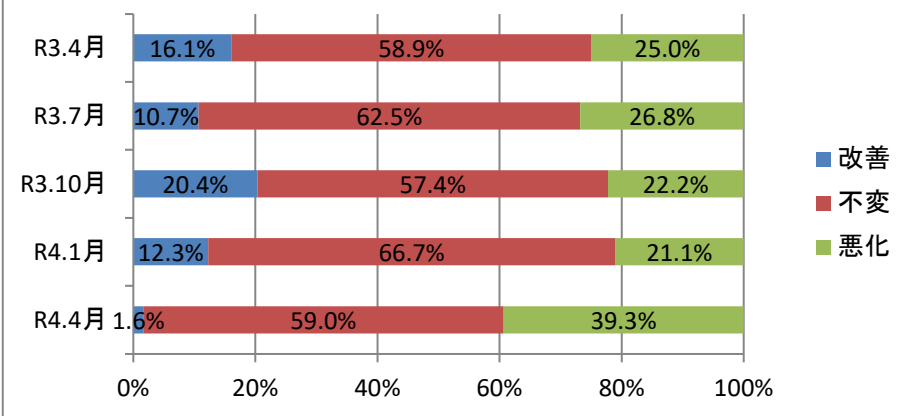


4. 景気見通し

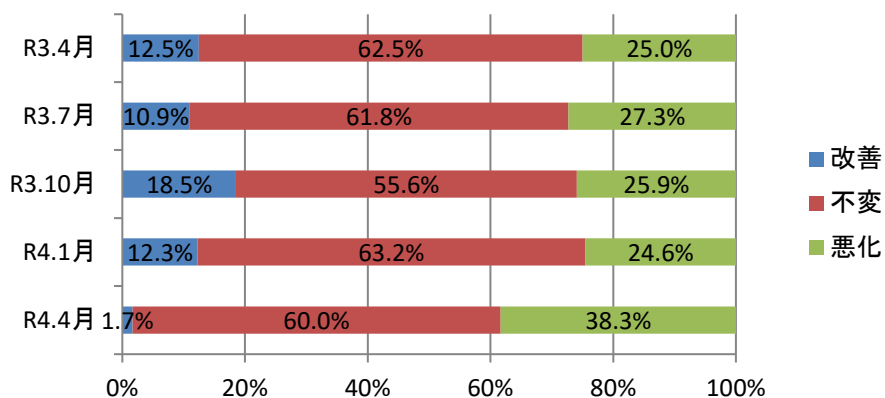
(1) 国内景気の見通し



(2) 県内景気の見通し



(3)所在地域の景気見通し



(4)業界の見通し

